

Use table below to enter information regarding each sign for approval. Please use each letter to reference each sign rendering in packet.

SIGN	Type (Façade, Pole, Monument, other)	Dimensions (Height, Length, Width)	Sqft (Measurement standards found on Pg.7 of Sign Code)	Façade Width (Linear Ft of building façade where wall sign is being installed)	Height	
					To Top	To Bottom
A	Canopy	23"h x 219.5"l x 16"d	35.056 sq ft	40ft 6in	14ft 5in	12ft 6in
B	Canopy	23"h x 206"l x 16"d	32.9 sq ft	76ft	14ft 5in	12ft 6in
C	Wall	79.3"h x 56.8"l x 5"d	31.7 sq ft	76ft	8ft	1ft 5in
D						
E						
F						

1 CHANNEL LETTERS-DETAILS

SCALE: 1/4"=1'

Quantity: 1



ELECTRICAL TARGET ON CENTER

ATTACHMENT TO BE CONFIRMED PRIOR TO PRODUCTION

FRONT-LIT CHANNEL LETTERS

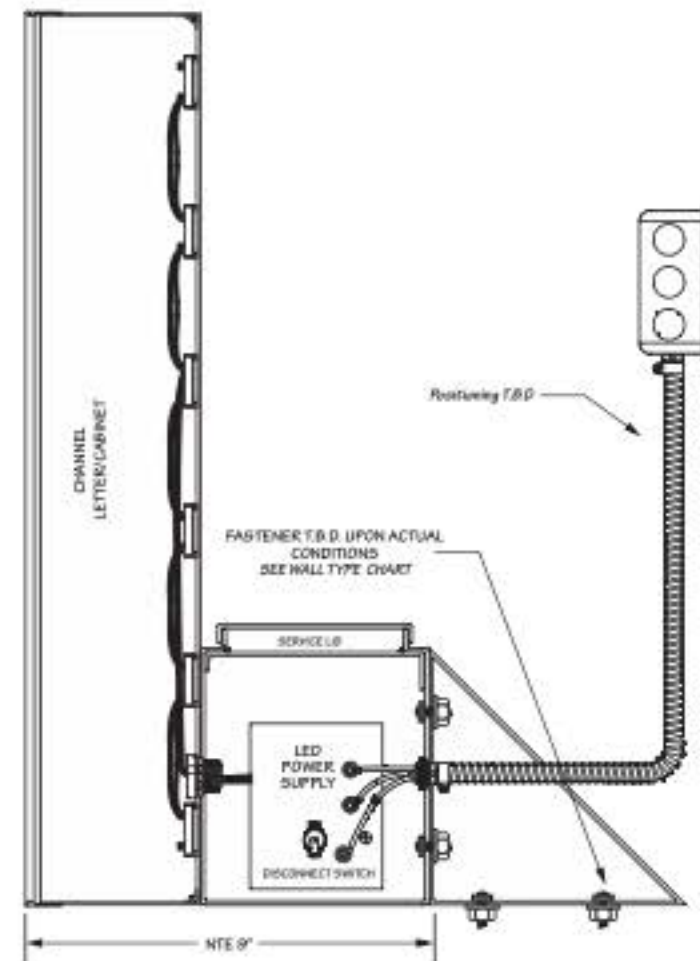
FACE MATERIAL:	3/16" WHITE ACRYLIC
RETURN COLOR:	BLACK
TRIMCAP COLOR:	1" BLACK
ILLUMINATION:	LED WHT INT. ILLUM.
MOUNTING:	AWNING RACEWAY
DEPTH:	5"

~~40.47 SqFt~~

NEEDS TO BE UNDER 36 SF

35.056 SqFt

FRONT ELEVATION



22 ATTACHMENT POINTS

2 CHANNEL LETTERS-DETAILS
SCALE: 1/4"=1'

Quantity: 1

B



DAY/NIGHT PERFORATED VINYL

ELECTRICAL TARGET ON CENTER

ATTACHMENT TO BE CONFIRMED PRIOR TO PRODUCTION

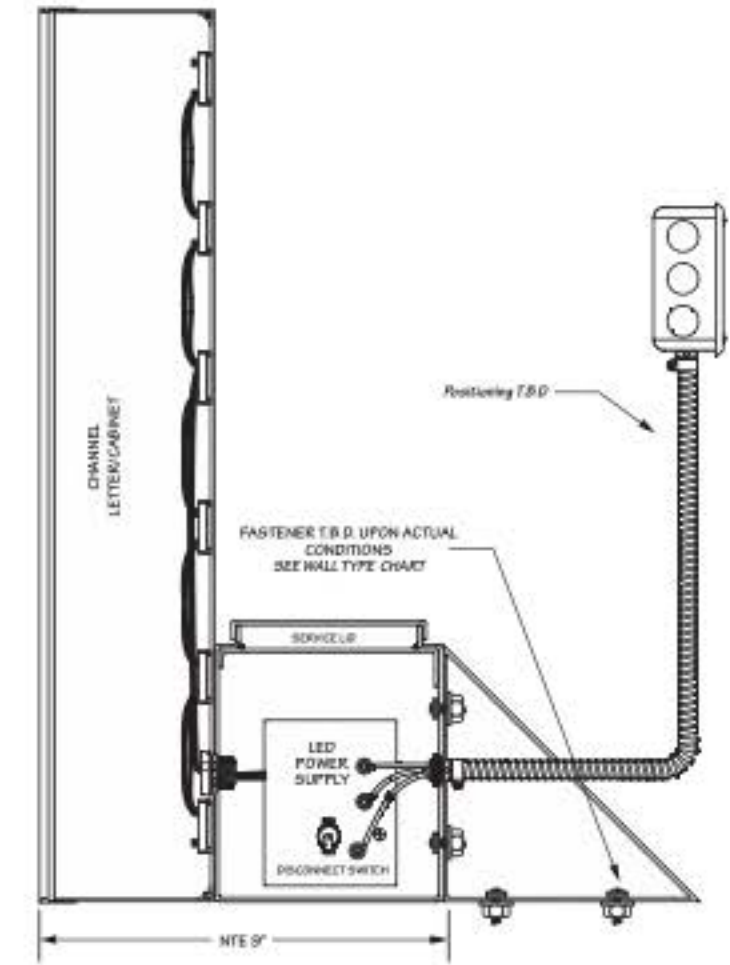
FRONT-LIT CHANNEL LETTERS	
FACE MATERIAL:	3/16" WHITE ACRYLIC
RETURN COLOR:	BLACK
TRIMCAP COLOR:	1" BLACK
ILLUMINATION:	LED WHT INT. ILLUM.
MOUNTING:	AWNING RACEWAY
DEPTH:	5"

~~39.08 SqFt~~

NEEDS TO BE UNDER 36 SF

32.9 SqFt

SIDE ELEVATION



20 ATTACHMENT POINTS

3 REVERSE CHANNEL LETTERS-DETAILS

SCALE: 1/2"=1'

Quantity: 1

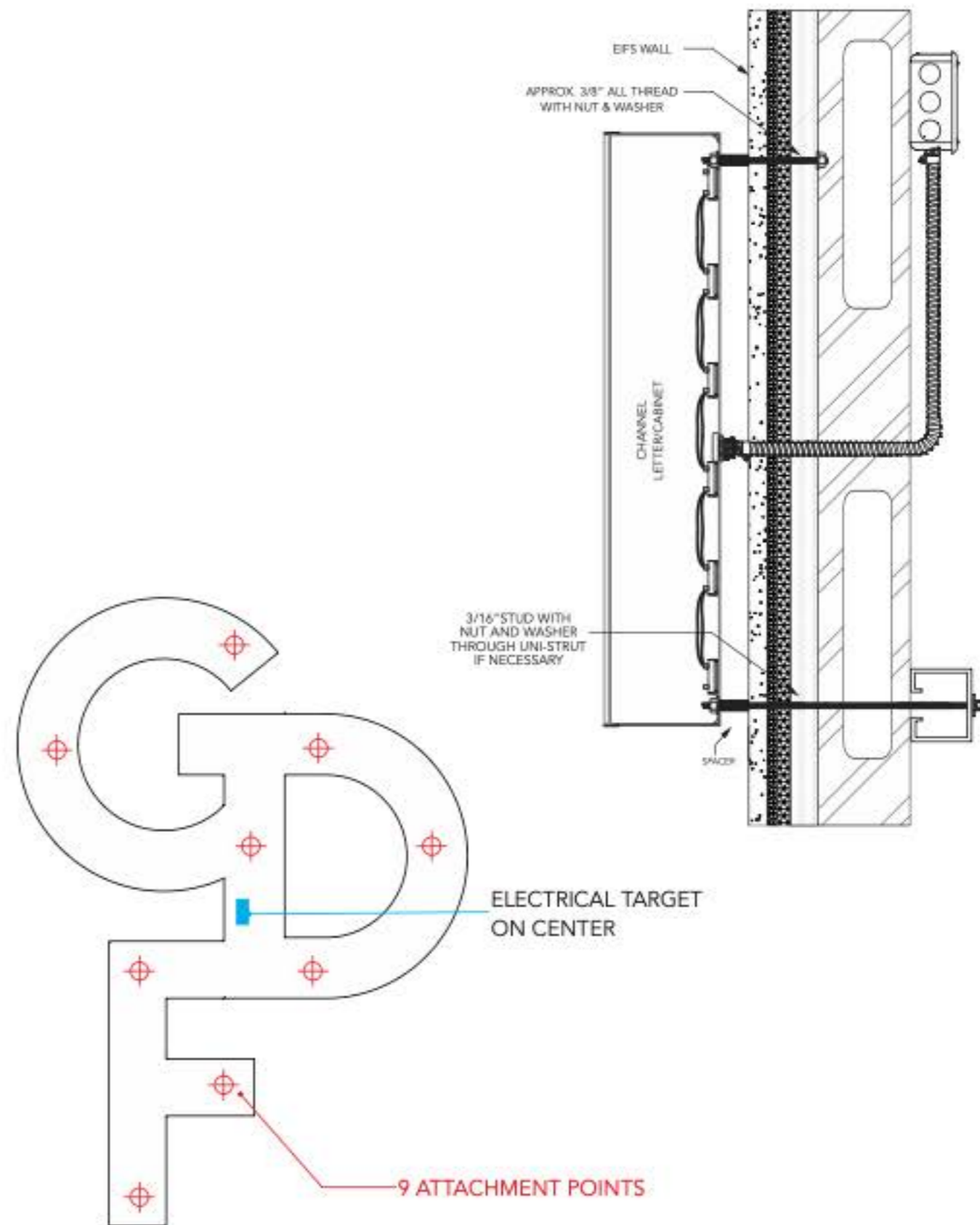


HALO-LIT REVERSE CHANNEL LETTERS

FACE MATERIAL:	ALUMINUM
RETURN COLOR:	BLACK
TRIMCAP COLOR:	N/A
ILLUMINATION:	HALO ILLUM.
MOUNTING:	STUD MOUNTED
DEPTH:	5"

31.27 SqFt

SIDE ELEVATION



SIGN A ELEVATION



1 SOUTH ELEVATION
Scale: 1/4" = 1'-0"



2 WEST ELEVATION
Scale: 1/4" = 1'-0"

CERTIFICATION:

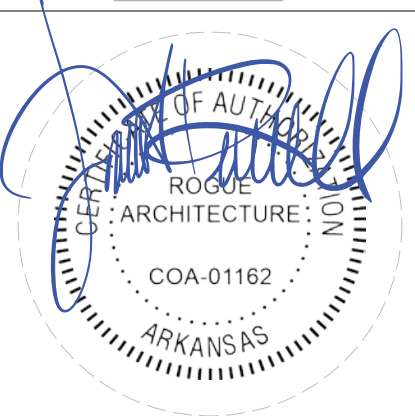
A4.3

ROGUE Architecture PLLC
300 S Spring Street
Suite 720
Little Rock, Arkansas 72201
[p] 501.385.1576
[w] www.roguearch.com

2025.10.14
Issue Date:
EXTERIOR ELEVATIONS

**GOOD DAY FARM
DISPENSARY**
3205 HIGHWAY 5 N
Bryant, Arkansas 72019

ROGUE
architecture

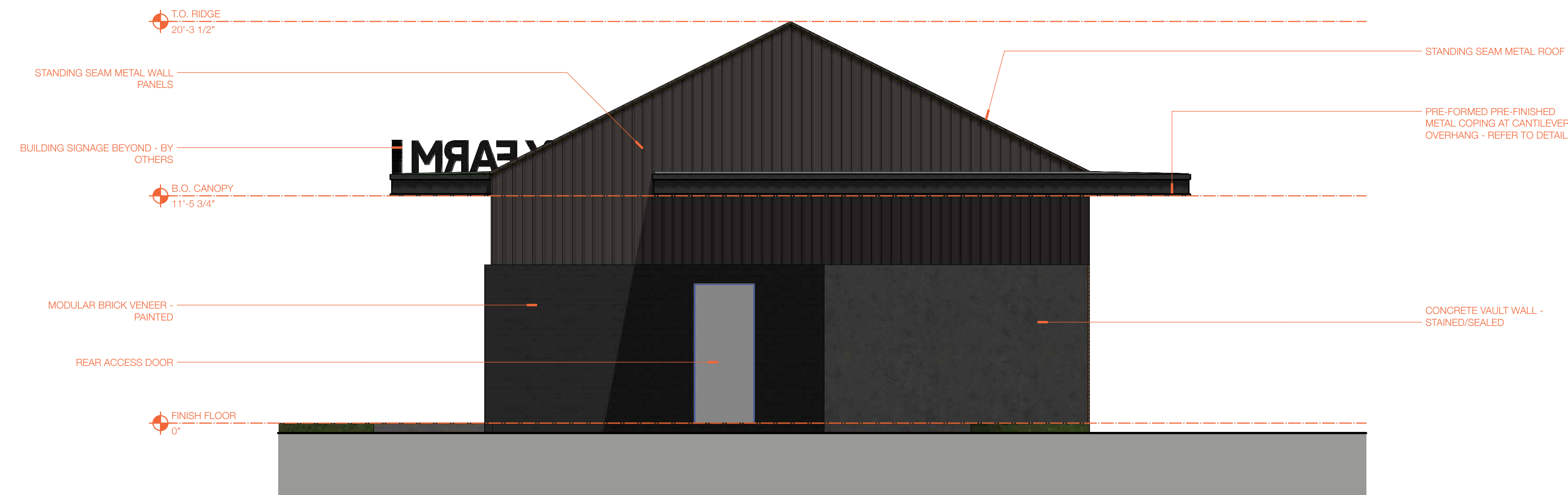


Revisions	Issue Date

A

B

C



1 NORTH ELEVATION
Scale: 1/4" = 1'-0"

SIGN B & C ELEVATION



76 ft 0 in

2 EAST ELEVATION
Scale: 1/4" = 1'-0"

CERTIFICATION:

A4.4

ROGUE Architecture PLLC
300 S Spring Street
Suite 720
Little Rock, Arkansas 72201
[p] 501.385.1578
[w] www.roguearch.com

2025.10.14
Issue Date:
Revisions

**GOOD DAY FARM
DISPENSARY**
3205 HIGHWAY 5 N
Bryant, Arkansas 72019

ROGUE
architecture

